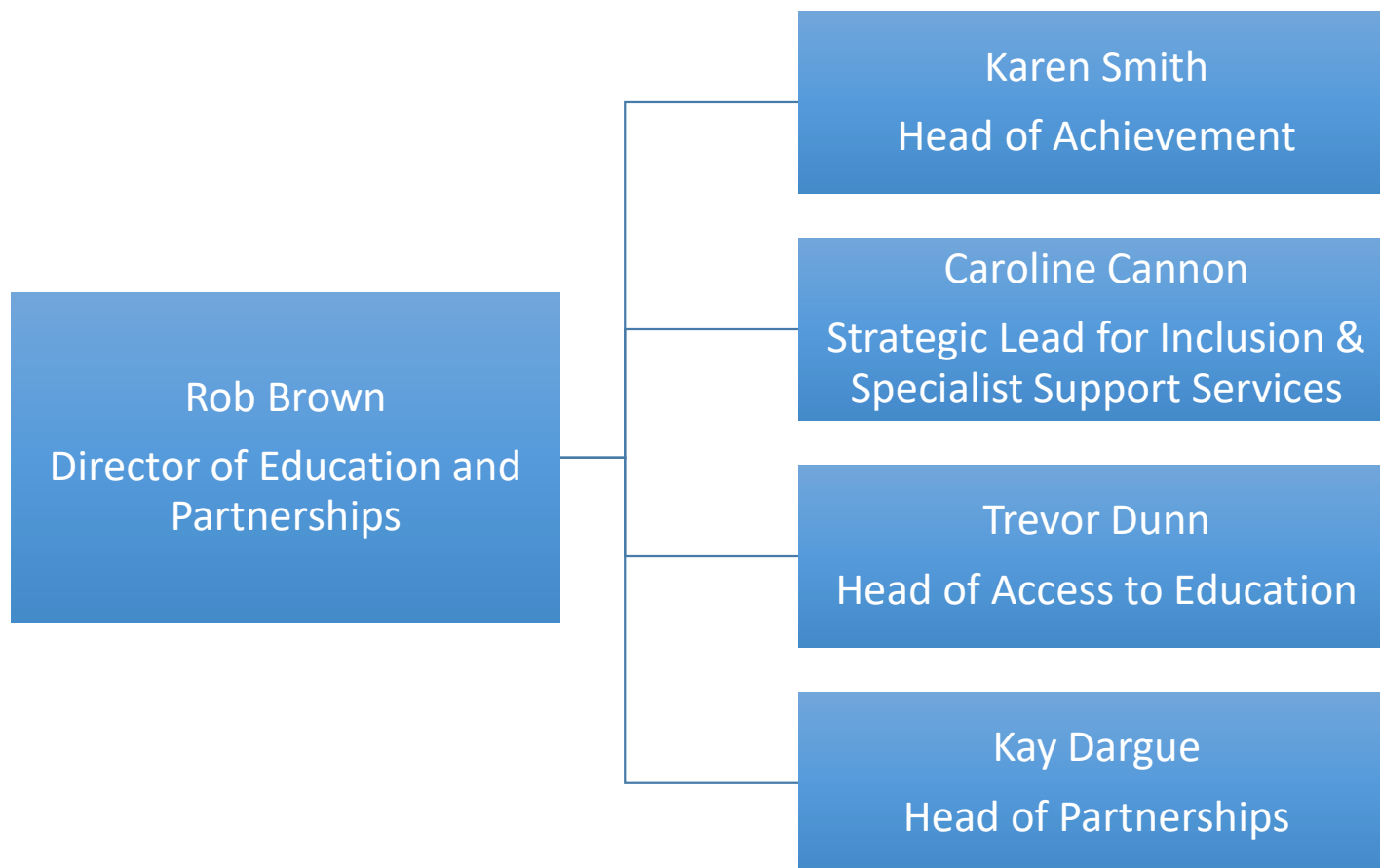


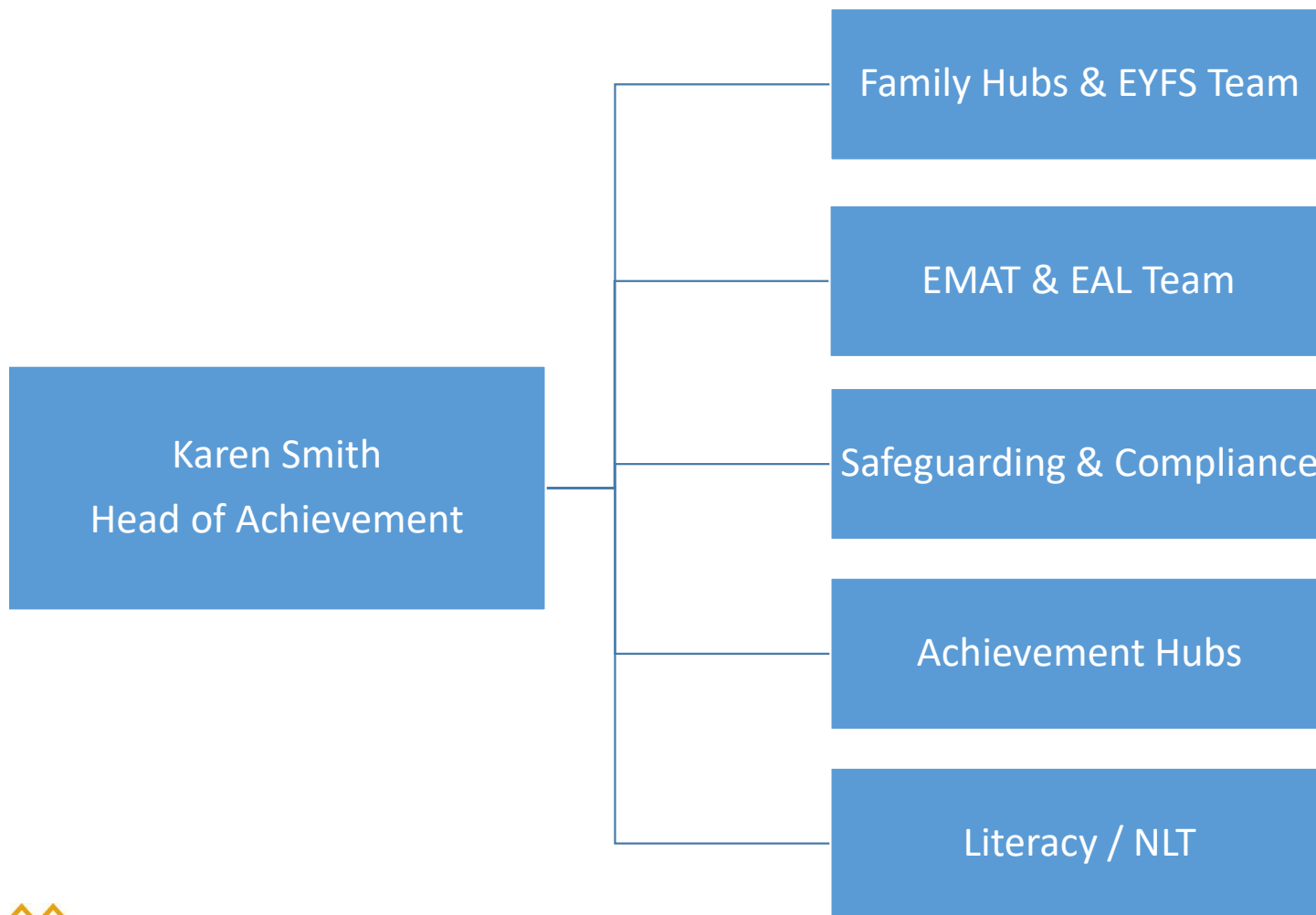


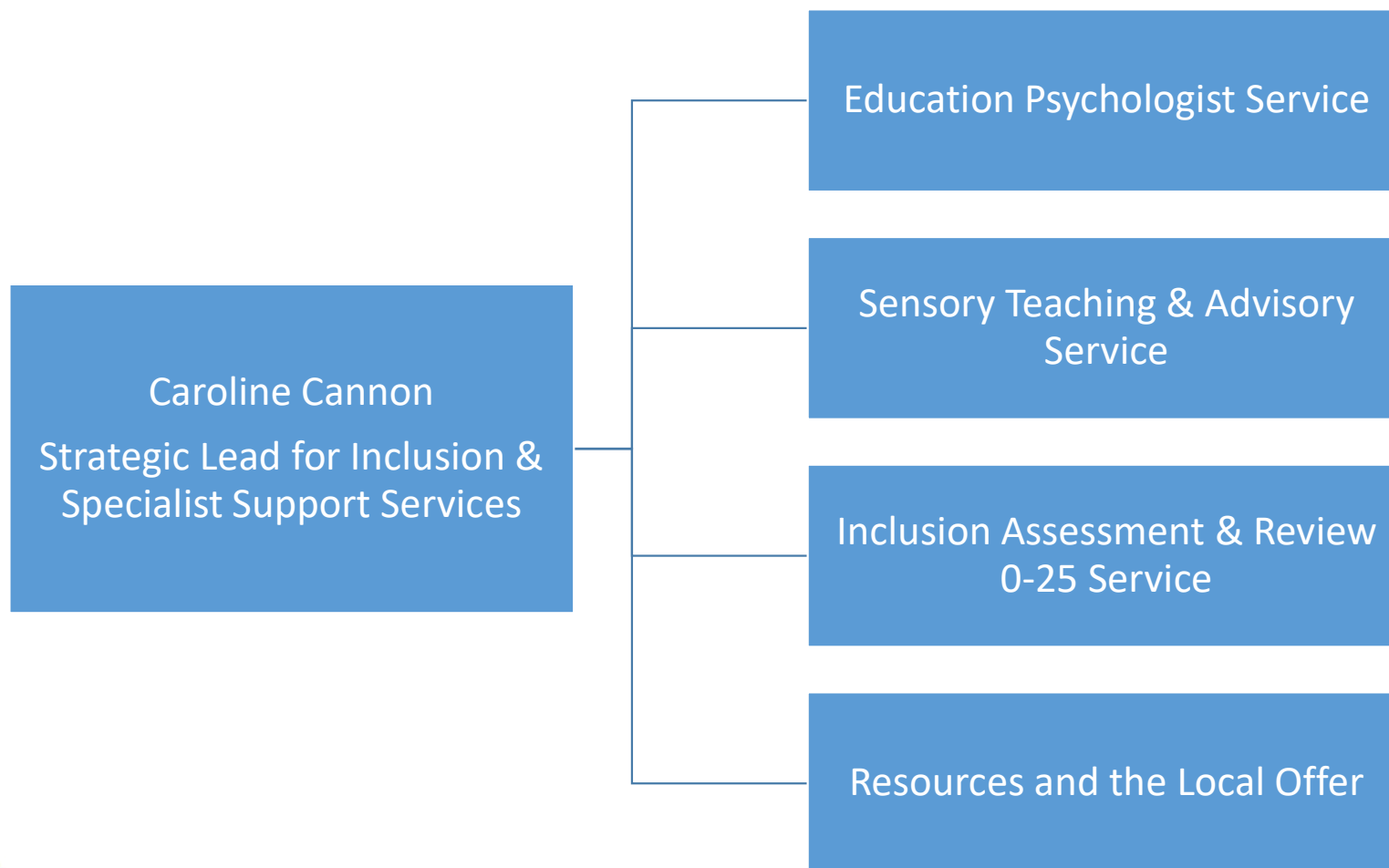
Scrutiny Panel

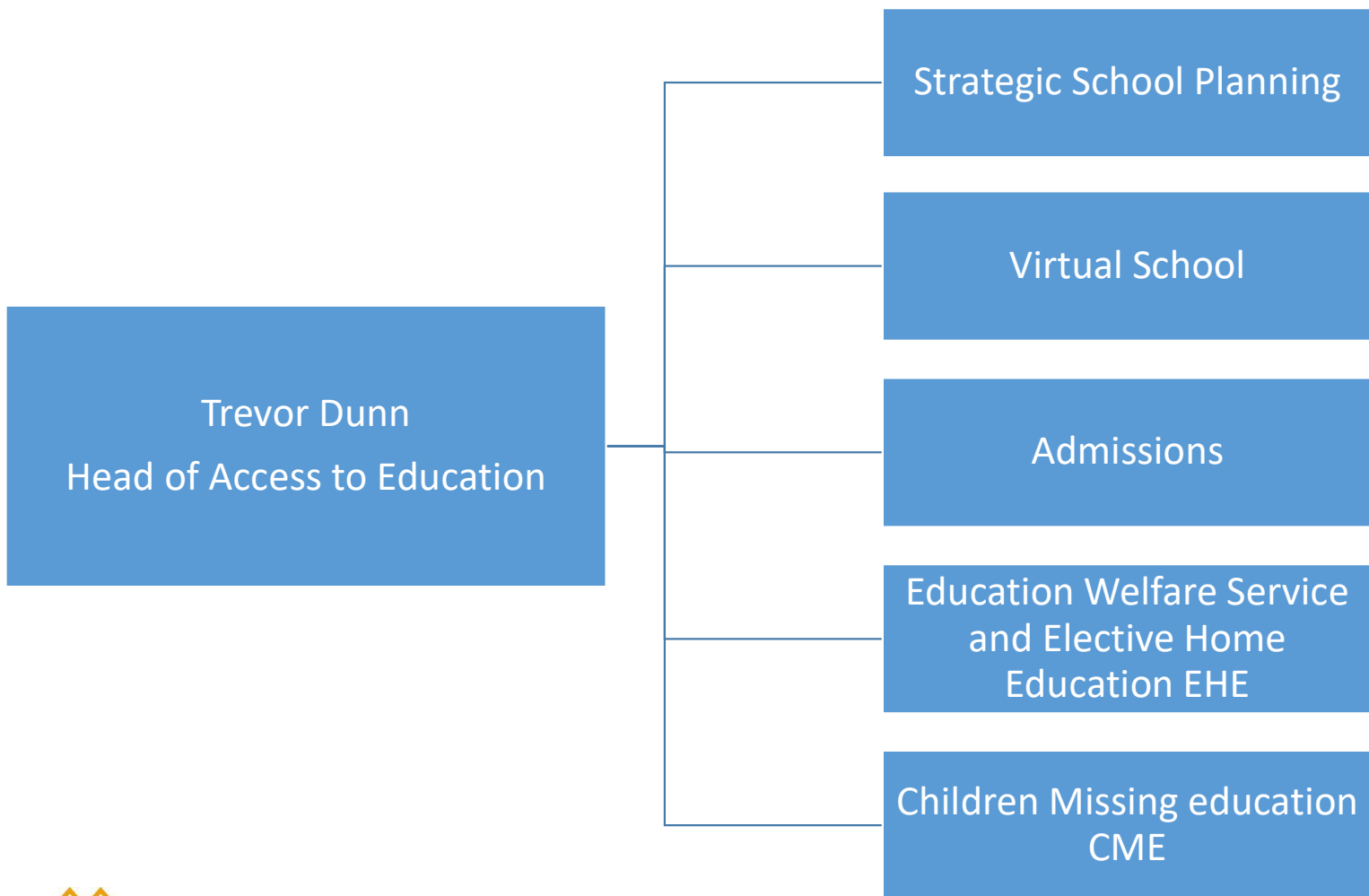
2024/25

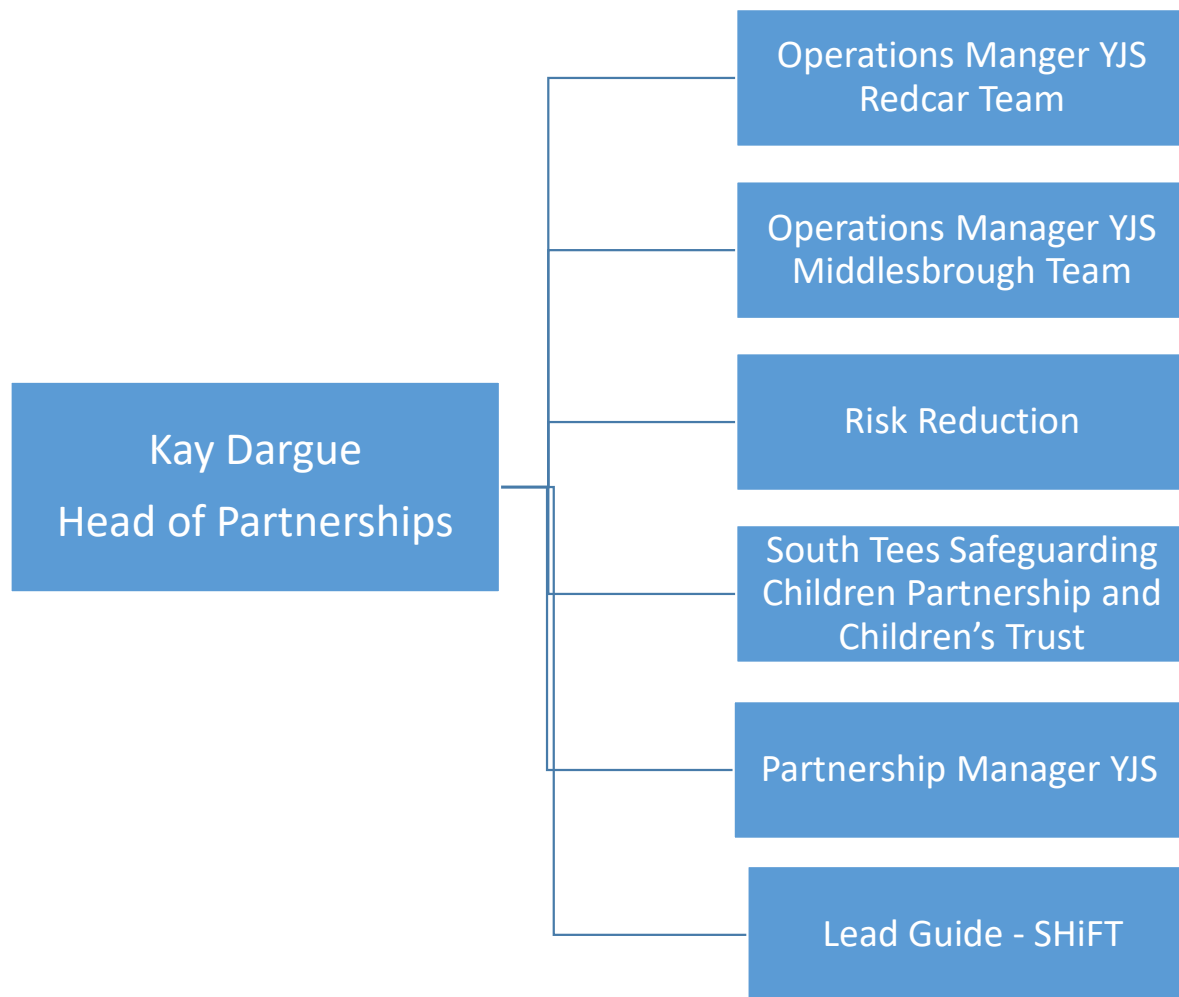












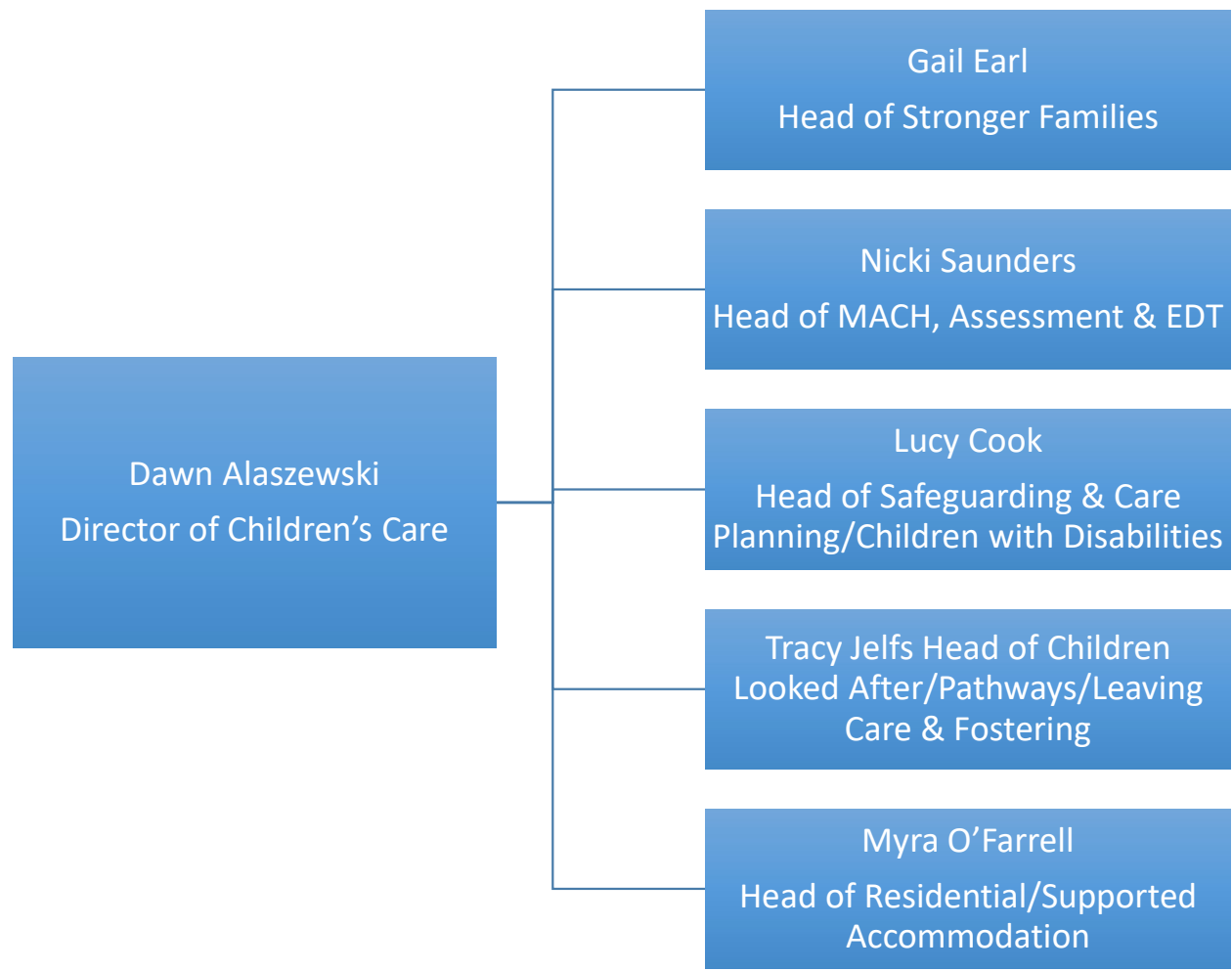
Priorities – Education & Partnerships

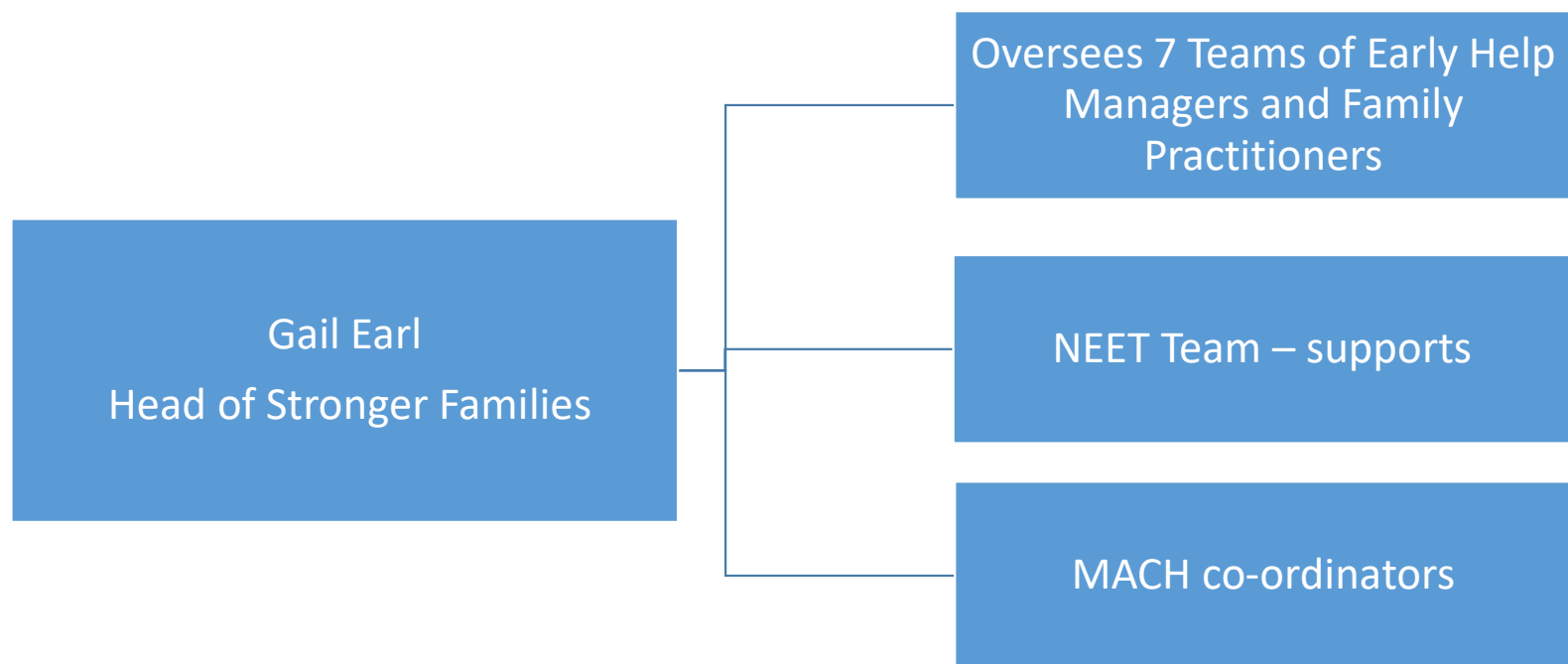
Challenges

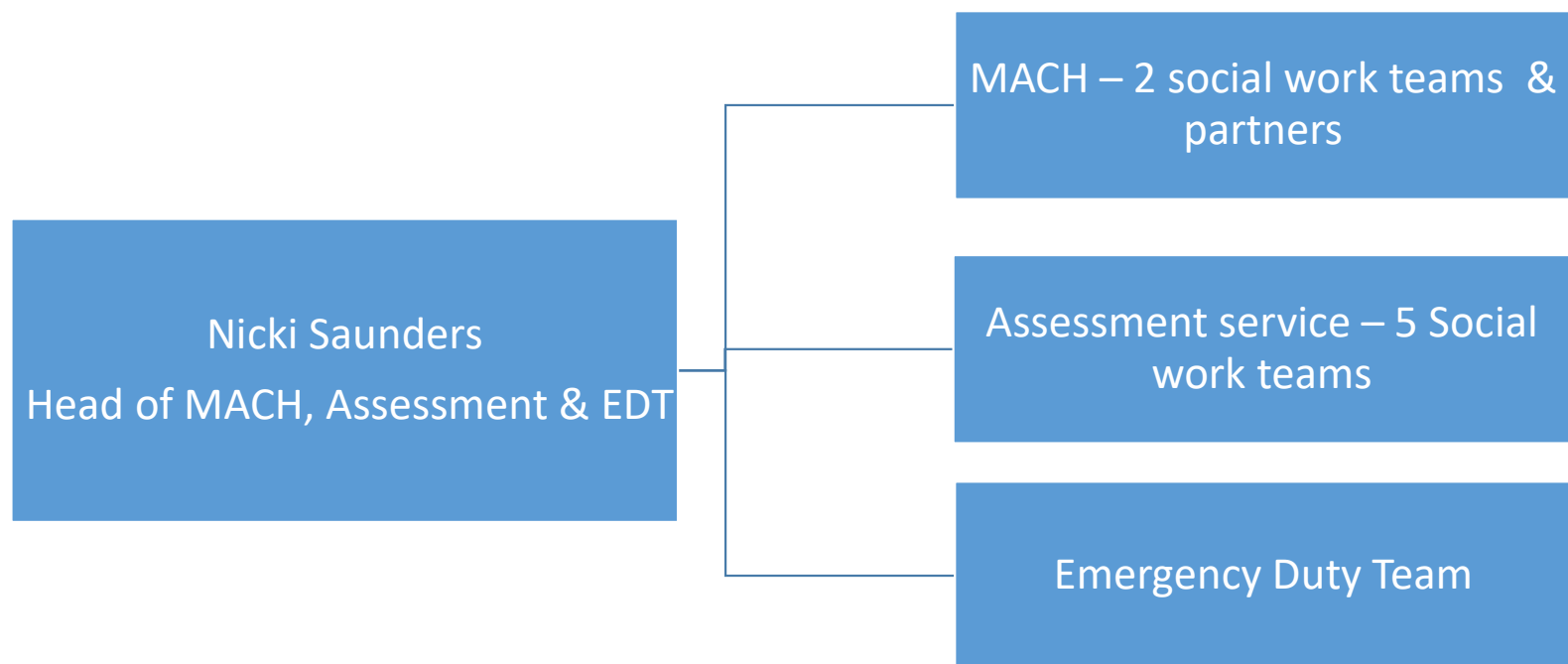
- Increasing Permanent Exclusions
- Increasing Education Health and Care Plans
- Increasing pressures on High Needs Funding
- Falling school roll contrasted with increasing pressure in some parts of town
- Low School Readiness
- Low attendance

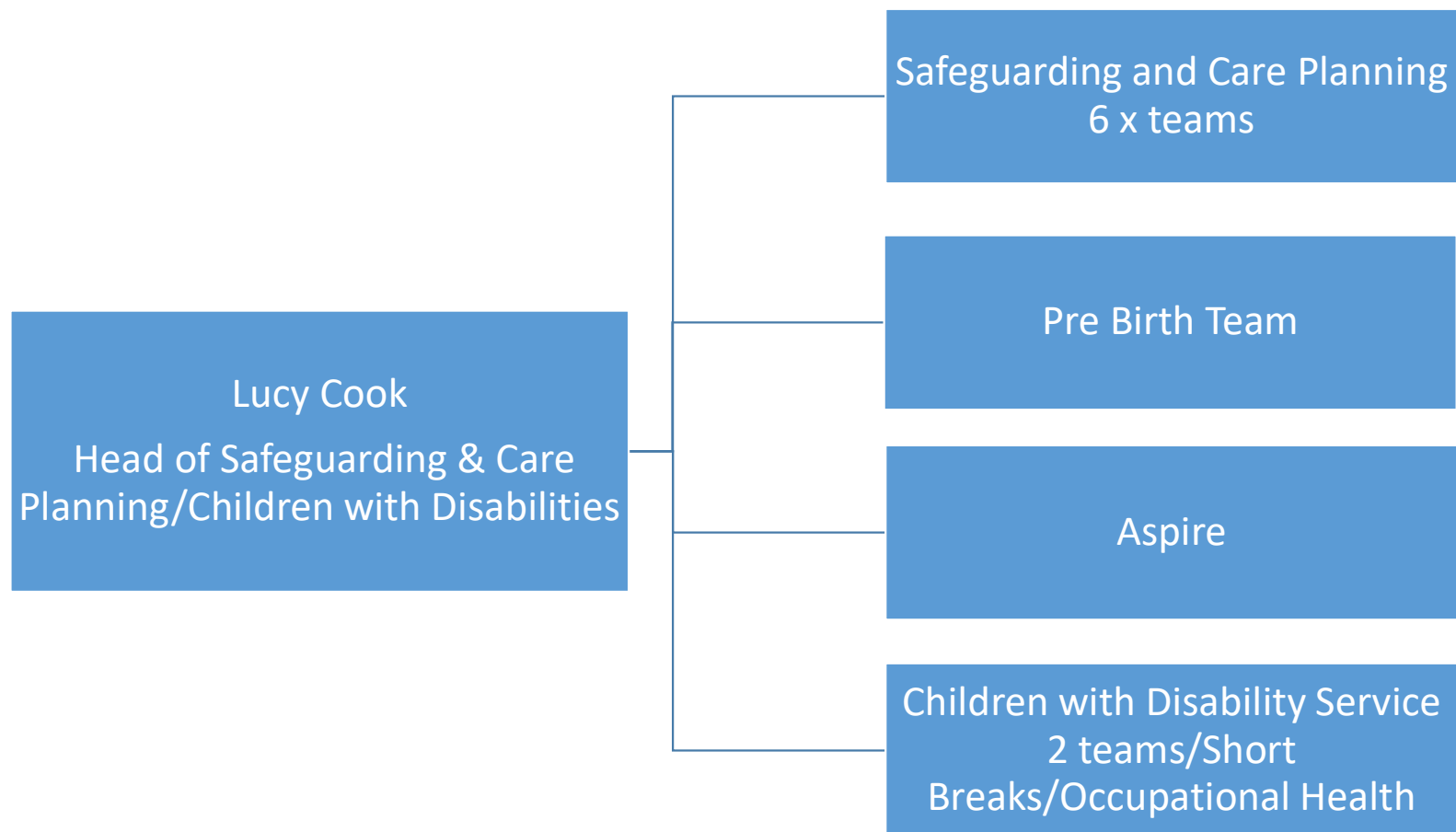
Innovation and Transformation

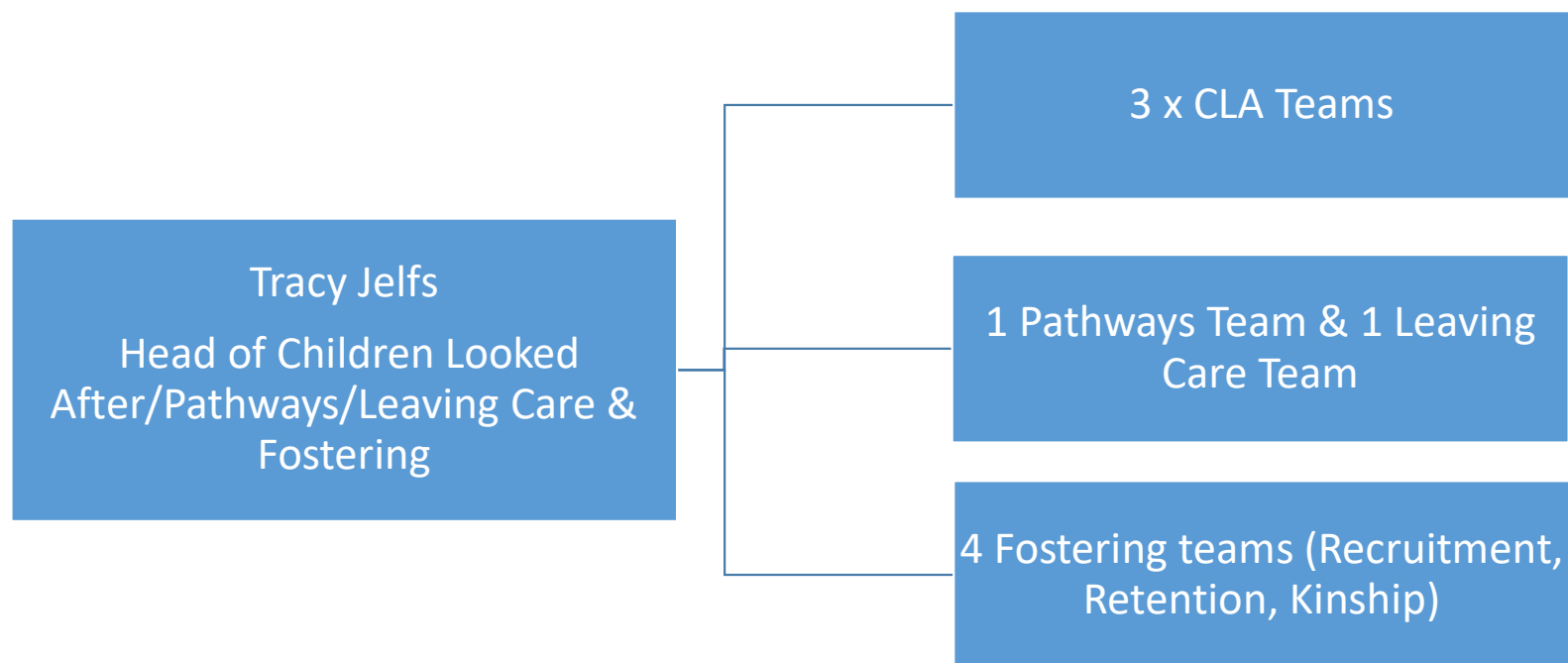
- Sector Led Improvement Partner (SEND)
- Inclusion and Outreach model
- Delivering Better Value Programme
 - SEND and Inclusion Clinics
 - Workforce Development
 - Review of Placements
 - Transitions
- Place planning
- Family Hubs
- Attendance project/ White Paper
- Turnaround / Instant Justice
- PROLCAIM
- Attendance strategy and VCAP project

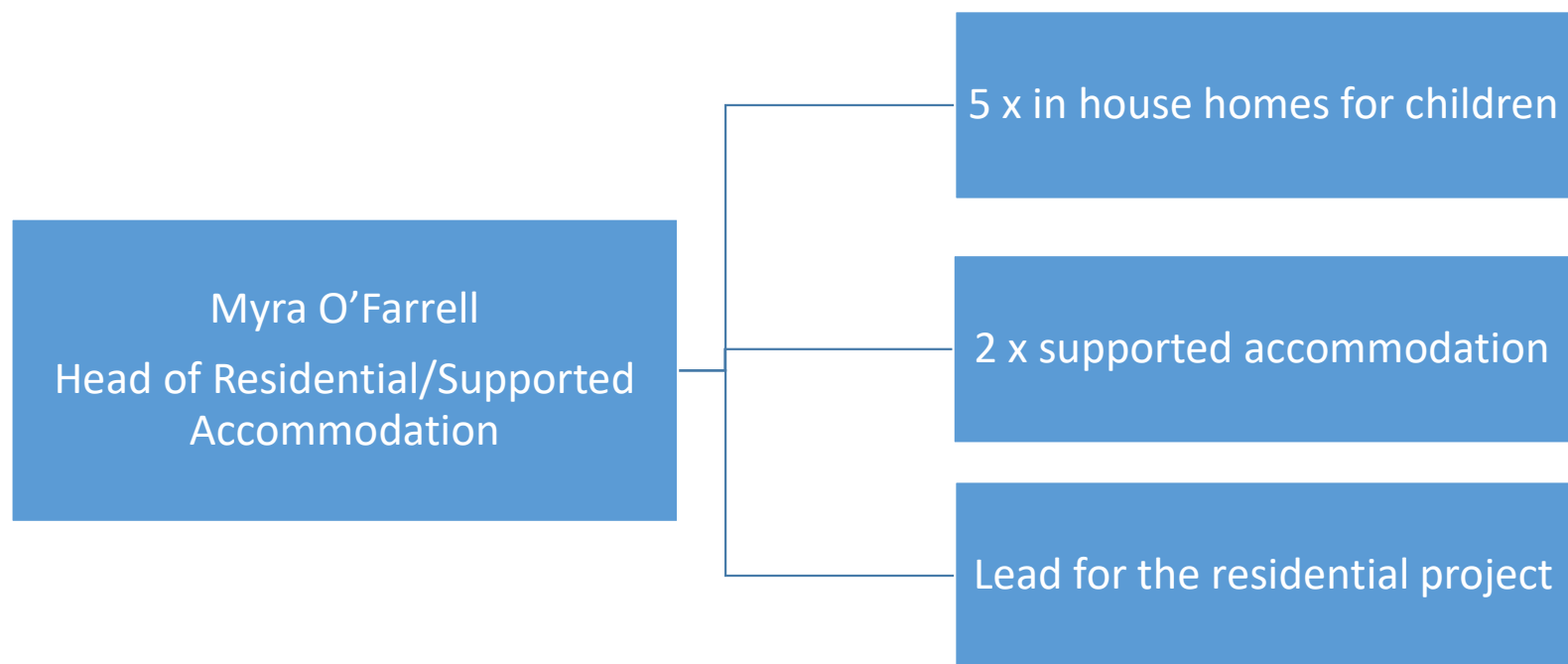












Priorities – Children’s Care

Challenges

- High demand
- High number of children who are in our care, subject to child protection/child in need plans
- Consistency of practice and performance
- Permanent staffing
- External placements for children
- Recruitment of foster carers
- In house homes for children
- Improvement notice from the DfE

Innovation and Transformation

- Investment in to the expansion of homes for children
- Partners in Practice (Islington)
- Family Hubs
- SHiFT
- Pitstop
- DfE grants – Reunification project
- Recruitment strategy
- Fostering Pathfinder
- Supporting families